

Category:	Non-Capacity Type Solenoid Pump
Application:	Water & Chemical Series
Classification:	Pressure (Piston) Type

FEATURES:

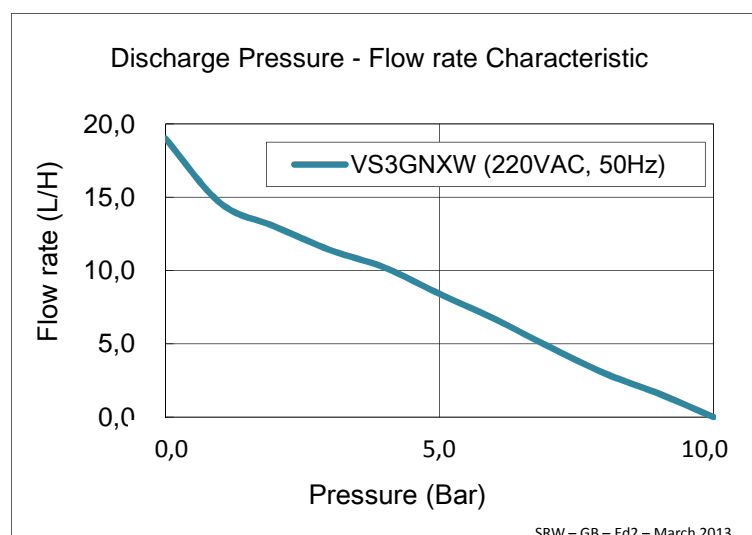
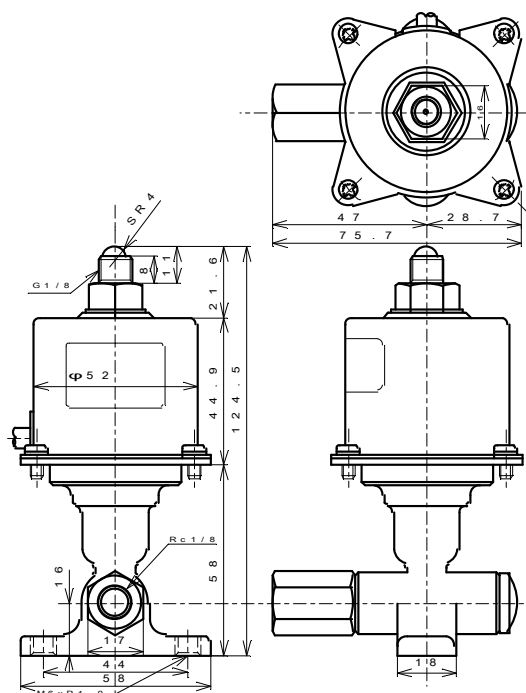
- These popular Non-Capacity Type solenoid pump models are in the most commonly used configuration for high pressure, water and chemical (pH: 6 ~ 10) applications.
- Every pump model in this series can be adapted at the factory for use with one of different input voltages (The coil is changed for each input voltage). For the AC input voltage options, usually the pump output pressure is generated when a half-wave AC voltage is applied.

PRIMARY
APPLICATIONS:

- Used in water sprayers.
- Used to transfer chemicals with pressure.
(Air conditioning system, Water sprinkle)


SPECIFICATIONS:

MODELS	VS3GNXW
SPECIFICATIONS	
Power Sources	100 - 240VAC (50 or 60Hz) [Half-Wave Rectifier is Required]
Power Consumption	34W (TyP.) / 50W (Max)
Maximum Free Flow Rate	19L/H (TyP.)
Maximum Pressure (No Flow)	10 Bar (TyP.)
Suction Level(m)	-1m ~ +2m
Fluid	Water
Internal Solenoid Cut-off Valve	Yes
Operating Temperature	-20 ° C ~ 40 ° C (Non-Freezing)
Mounting Thread	2x M6*1
Piping Connection Sizes	Inlet : Rc 1/8" Outlet : G 1/8"B (Half Spherical Surface of Radius 4 mm)
Weight	0.90 kg

OUTLINE DRAWING:


The graph is a central value and not a guaranteed value